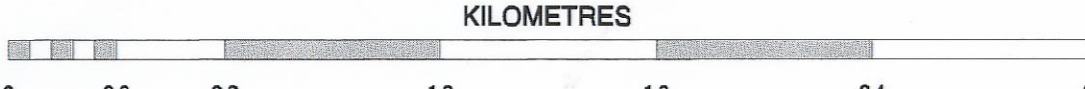


INTERPRETIVE MAP

FINS/Babine Forest Products
Fish and Fish Habitat Inventory
Helene/Augier-Pinkut
Mapsheet 093K032

Map 3 of 8

SCALE 1 : 20,000



Projection: ALBERS EQUAL AREA

PRINTED: May 03, 2001

AML - y:\active\final\ml\fine-ff\interp99\suppl.aml
Supplement AML - y:\active\final\ml\fine-ff\interp99\suppl.aml

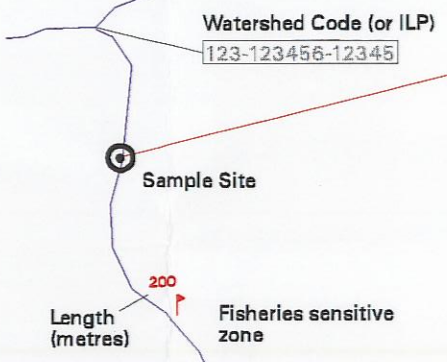
PREPARED BY:

FINS
FISH INVENTORY SPECIALISTS

AMD
Digital Imaging

Stream Information Summary

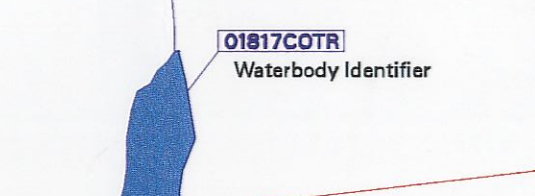
Site Data Symbol



Reach Summary Symbol



Lake Summary Symbol



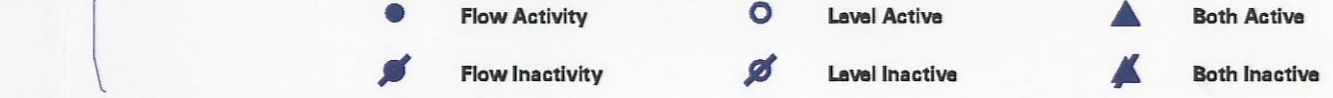
Enhancement / Management Activities



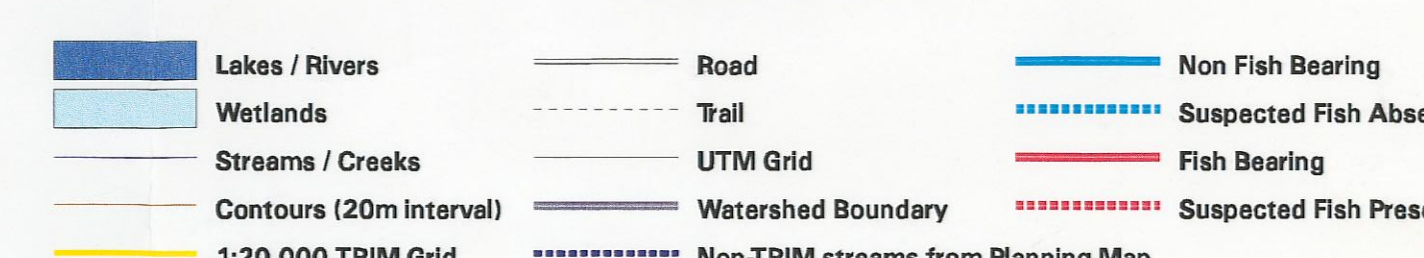
Obstructions



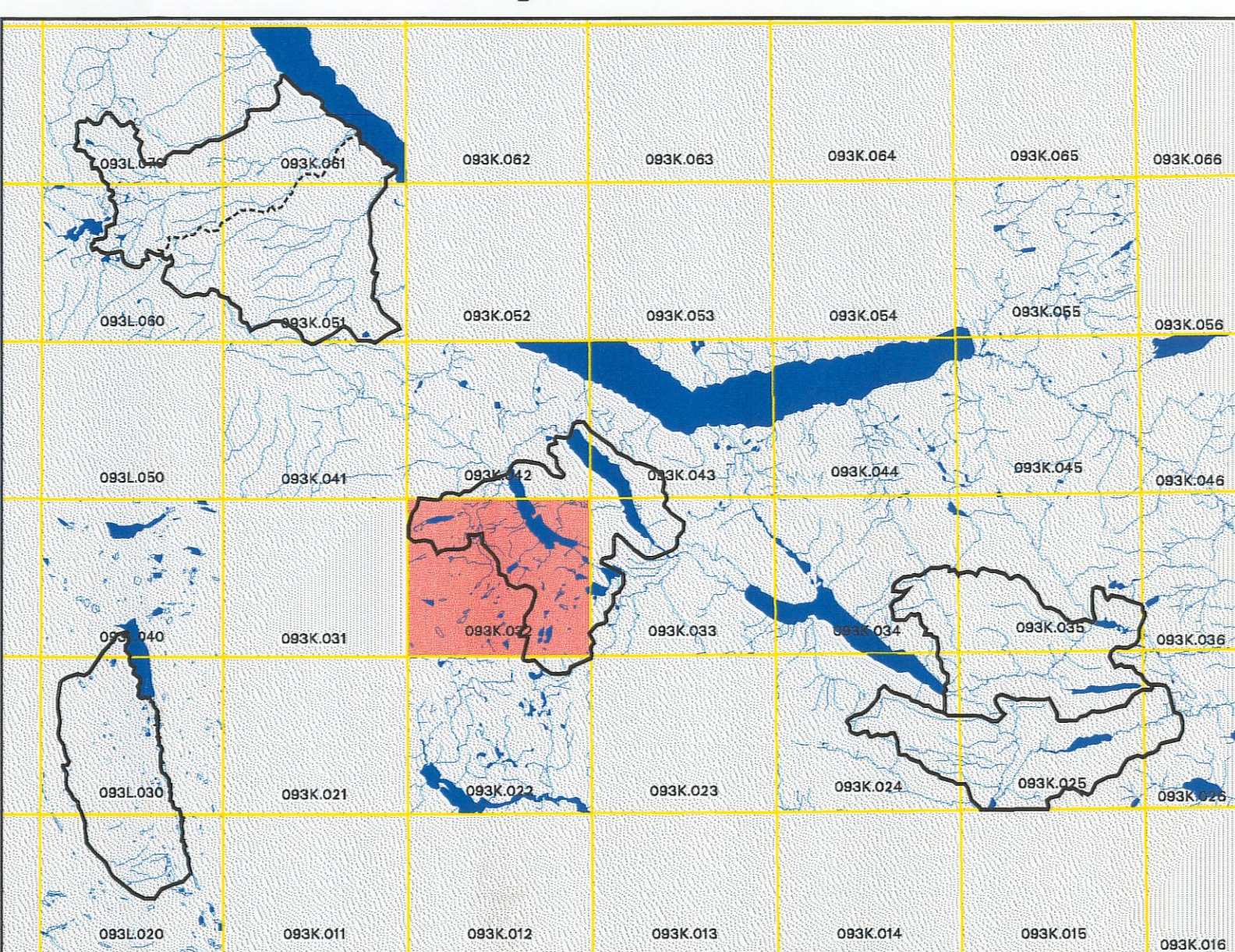
Hydrometric Stations



TRIM Features



Project Area(s)

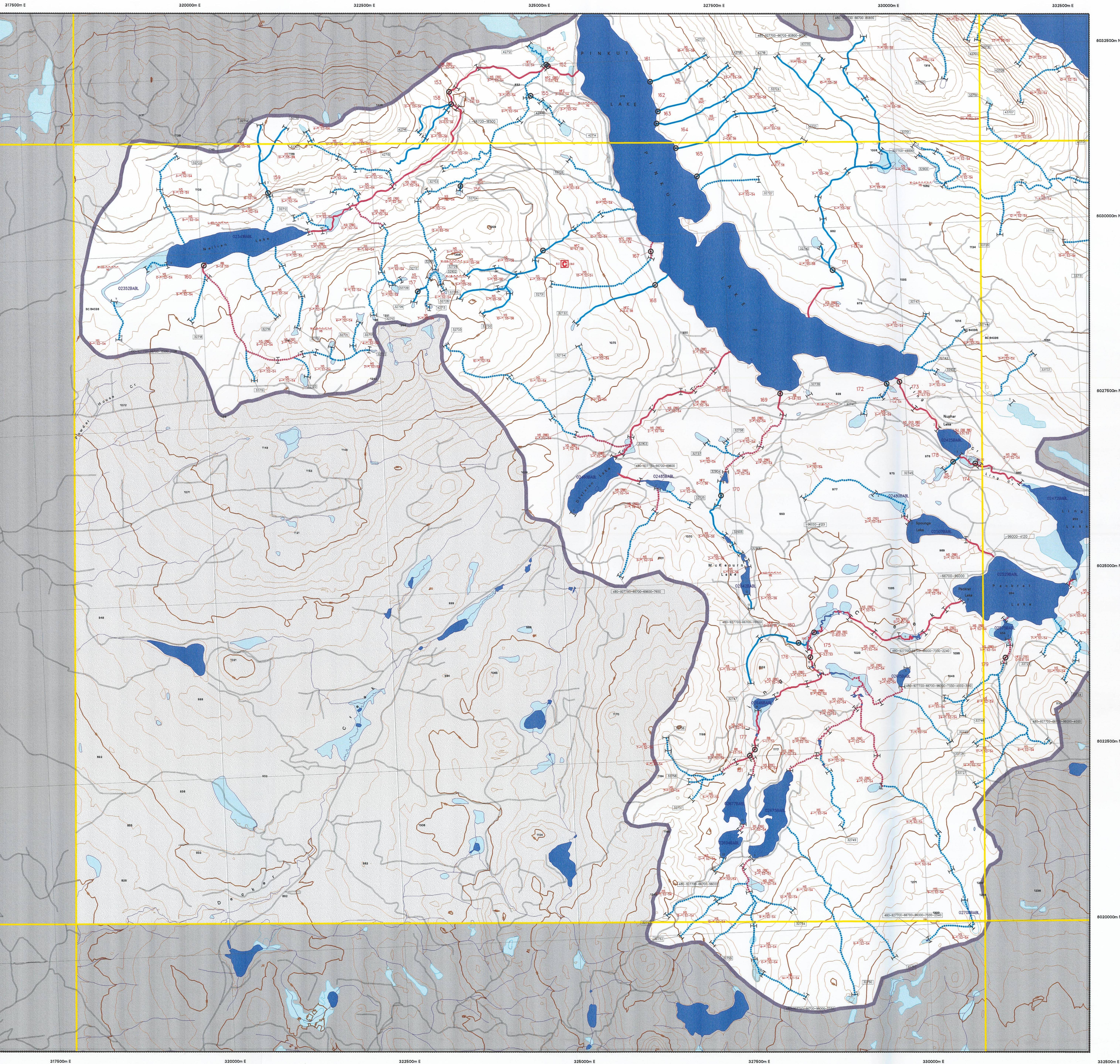


Source Information

BASE: TR
LOC: APE
HAB: INV
FISH: INVG
DATE INV: September 01 - October 21, 1999
STR SYM: INV
LK SYM: INV
INV MGME: MELP

MAPPING STANDARDS: B.C. Ministry of Fisheries - "Standards for Fish and Fish Habitat Maps"
VERSION: 2.0
DATE: May 1998

MAP ACCURACY IS PLUS OR MINUS 20 METRES



Fish Species Codes

DVBT	Dolly Varden/Bull Trout	KO	Kokanee	WCT	Westslope Cutthroat Trout
CT	Cutthroat Trout	LKC	Lake Chub	SU	General Sucker
RB	Rainbow Trout	BB	Burbot	FC	Frequently Confined
TSL	Threespine Stickleback	CAS	Prickly Sculpin	NS	Not Sampled
CAL	Coastrange Sculpin	C	General Minnow	NCD	Non Classified Drainage
PK	Pink Salmon	SK	Sockeye Salmon	NVC	No Visible Channel
SP	Splake	CSU	Large-scale Sucker	NFC	No Fish Caught
CCG	Slimy Sculpin	CO	Coho Salmon	SP	Species present, not identified
WF	White Fish General	CC	General Sculpin	(I)	Presumed fish presence

Stream Confinement Codes

EN	Entrenched
CO	Confined
FC	Frequently Confined
OC	Occasionally Confined
UN	Unconfined
N/A	Not Applicable

Stream Pattern Codes

ST	Straight
SI	Sinuuous
IR	Irregular, wandering
IM	Irregular, meandering
ME	Regular meander
TM	Tortuous meanders

Stream Morphology Codes

RP	Riffle Pool
CP	Cascade Pool
SP	Stap Pool
LC	Large Channel

Substrate Codes

F	Fines <2mm
G	Gravels 2-64mm
C	Cobbles 64-256mm
B	Boulders >256mm
R	Rock >4000mm

Disturbance Indicator Codes

O1	Beaver Dams	D1	Small woody debris
B1	Abandoned Channels	D2	Large woody debris
B2	Eroding Banks	D3	Recently formed LWD jams
B3	Avulsions	S1	Homogeneous bed texture
C1	Extensive Riffles or Cascades	S2	Sediment fingers
C2	Minimal Pool Area	S3	Sediment wedges
C3	Elevated Mid-channel Bar	S4	Extensive bars
C4	Multiple Channels or Bars	S5	Extensively scoured zones
C5	Disturbed Stone Lines		

This product has been accepted as being in accordance with approved standards within the limits of Ministry quality assurance procedures. Users are cautioned that interpreted information on this product developed for the purposes of the Forest Practices Code Act and Regulations, for example stream classifications, is subject to review by a statutory decision maker for the purpose of determining whether or not to approve an operational plan.